



# **YOUR PROJECT OUR FOCUS**

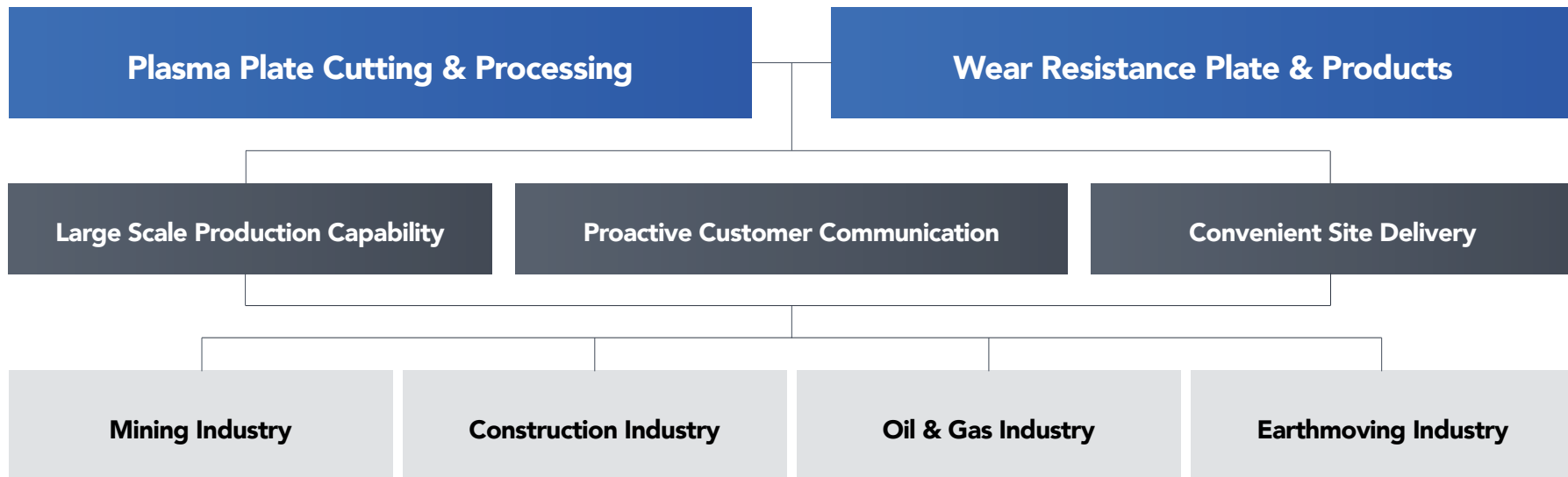
**RESULTS DRIVEN STEEL & WEAR PLATE PROCESSING**



# Speed, Cost Efficiency & Accuracy

**Together, let's eliminate production setbacks.**

Use our expertise to deliver a smooth project from the initial contact through to accurate plate and wear products, to packing & convenient delivery.

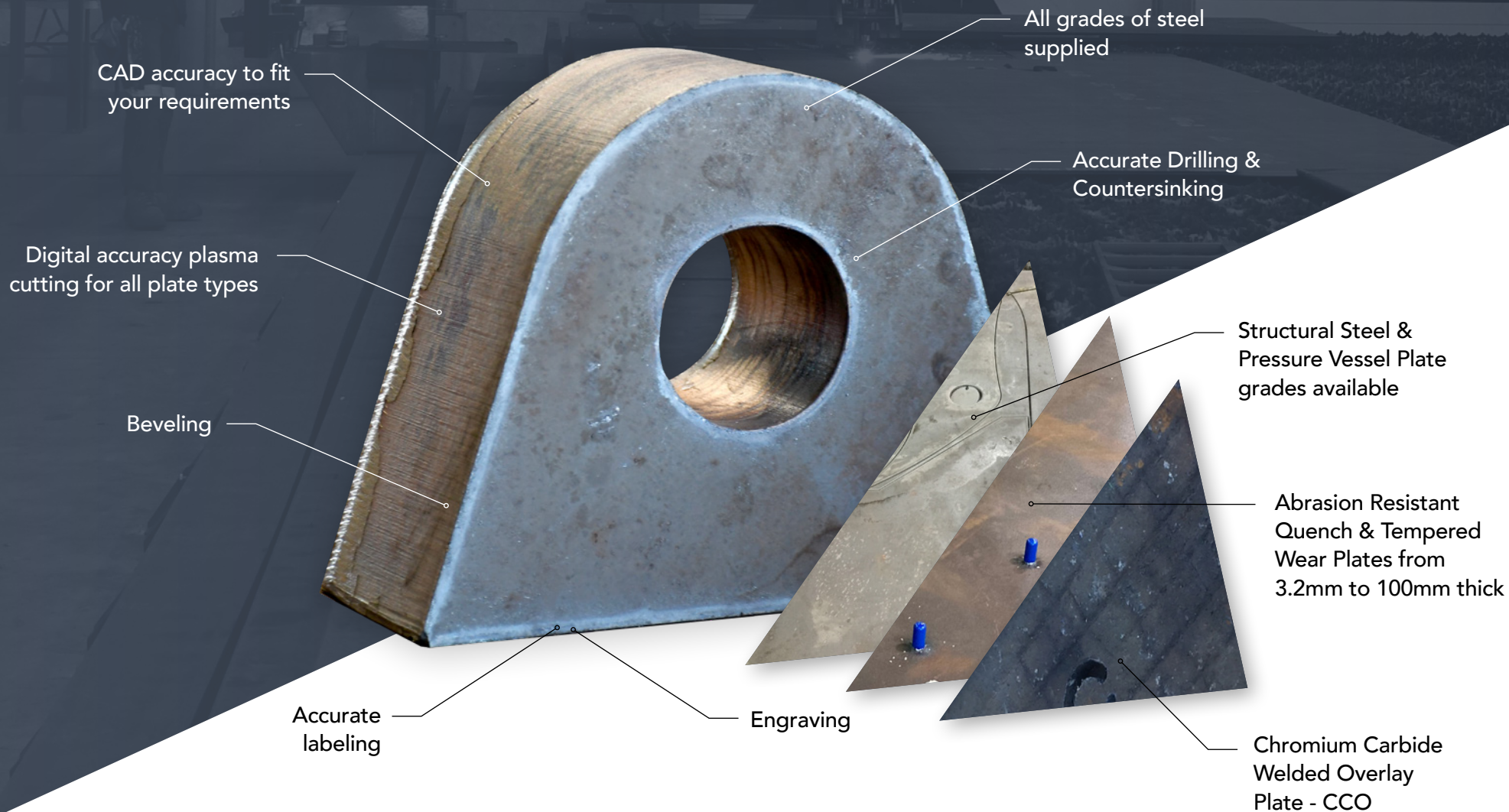


**YOUR PROJECT OUR FOCUS**  
RESULTS DRIVEN STEEL & WEAR PLATE PROCESSING



# Steel Plate Processing + Wear Products

## Complete In-House Capability





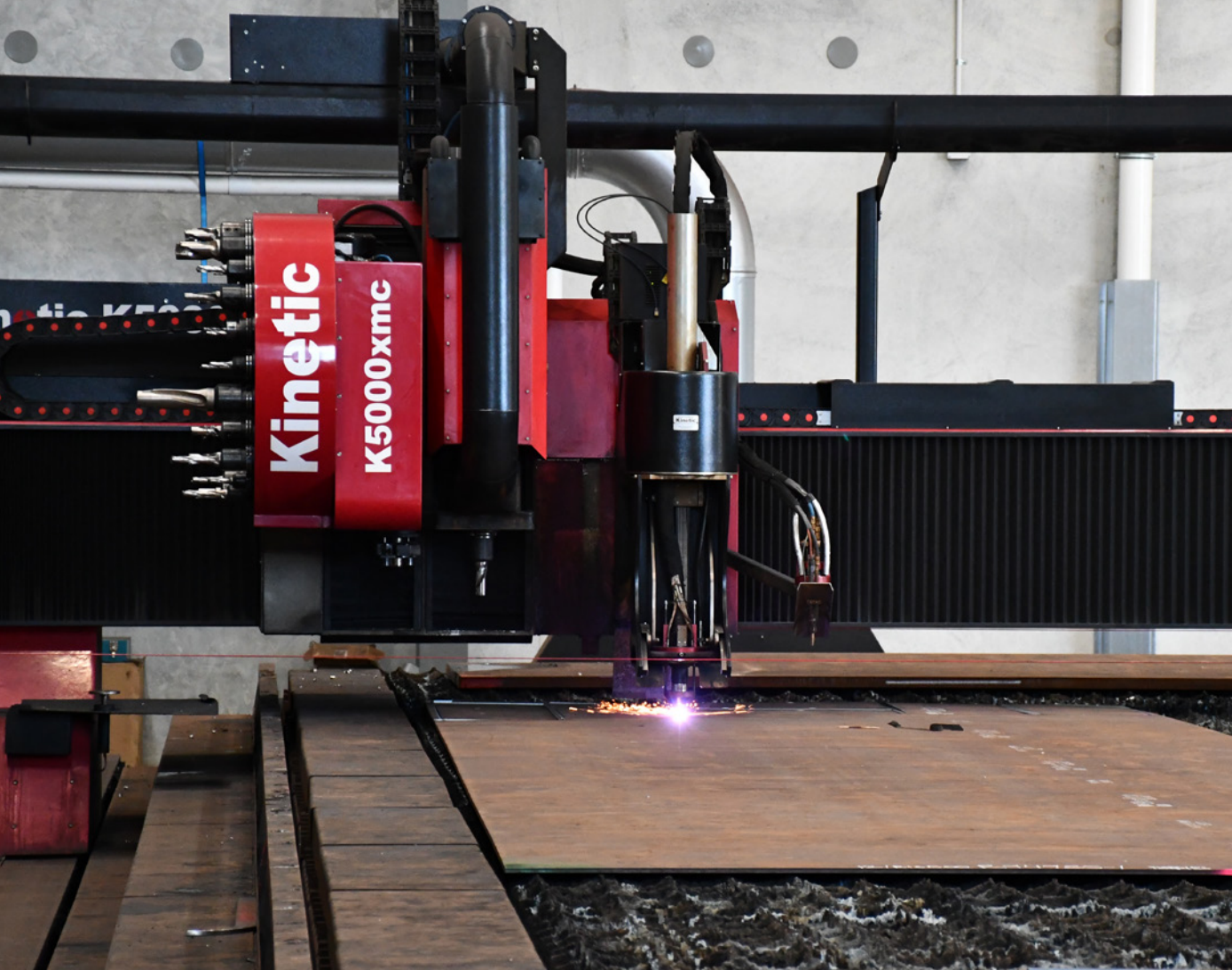


**Don't let remote locations hinder your productivity.**

With Deltatech, benefit from a reliable supply chain that ensures timely delivery of your required plasma cutting and wear-resistant plates right to your work site.





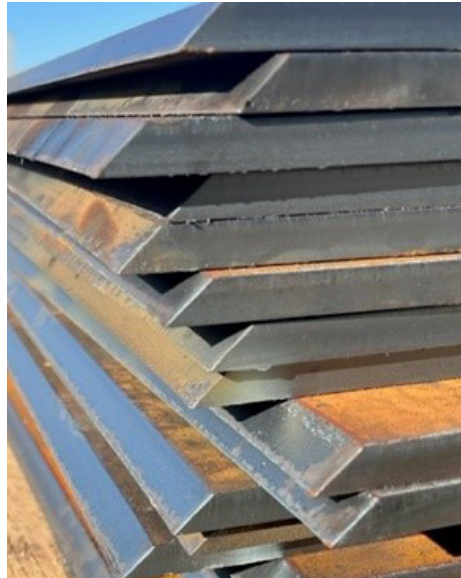
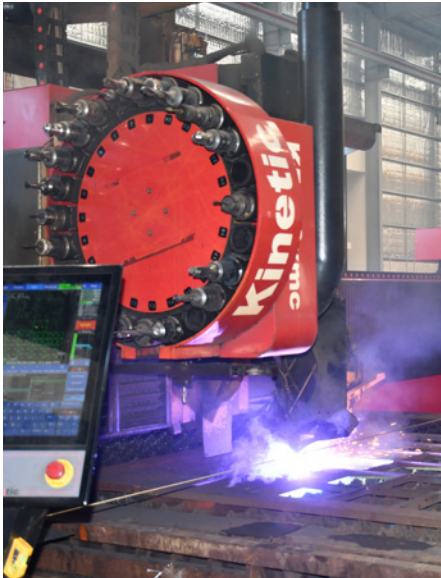


## Uncompromising on Quality

Experience Plasma Cutting Plates Built to Last in Tough Environments. **Visit Us Today!**

### EQUIPMENT LIST

- K5000 with 5,000mm wide cutting capacity C/W 4 x OXY HEADS
- K5000 with 3,200 wide cutting capacity
- 20T Overhead Dual Hoist Crane with Truninger Magnet
- 2x 10T Overhead Cranes
- Digitizer with 3,000m x 1,200m template space (for Reverse Engineering Parts)
- Prime Mover & Trailer
- 2x 12T Rigid Truck
- 2x 5T forklifts
- 2T forklift
- Land Size: 15,500 m<sup>2</sup>
- Shed Size: 3,000 m<sup>2</sup>
- Office Size: 700 m<sup>2</sup>
- Future Development of 3,500 m<sup>2</sup> Facility



## Steel Plate Plasma Cutting & Thermal Cutting

We deliver fast and accurate plasma cutting and oxy fuel cutting services.

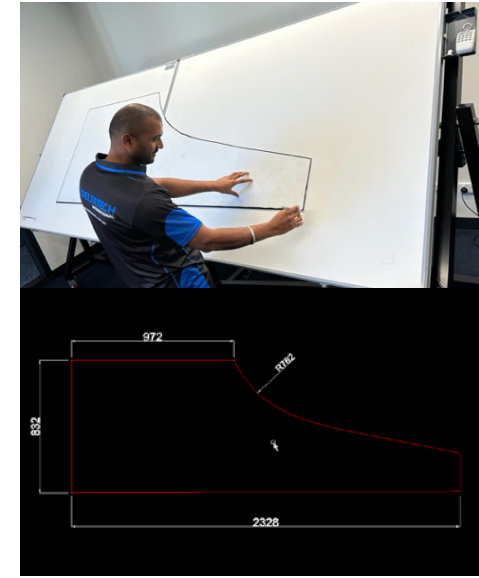
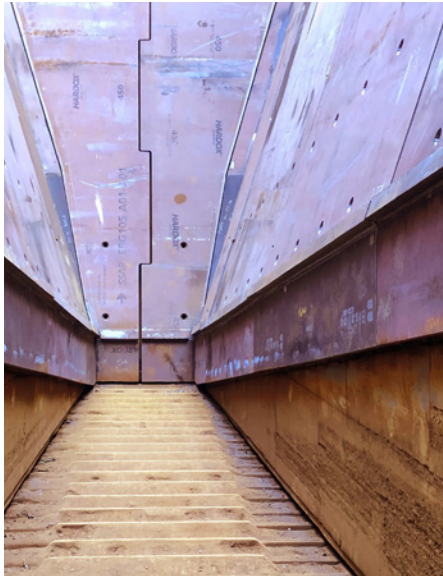
- Plasma cutting up to 50mm thick
- Oxy Fuel cutting up to 250mm thick
- Plasma Beveling
- Cutting Area 3,200mm x 24,000mm
- Grades in stock: 250GR, 350GR, 250GR Floorplate, BIS400, BIS450, BIS500, HARDOX450, HARDOX500
- Other materials readily sourced

## Steel Drilling, Tapping, Boring & Milling

Precision accuracy for cutting, drilling & milling to your specifications.

- Drilling up to 80mm hole
- Tapping
- Milling
- Counter Sinking
- Counter Boring
- Chamfering
- Hole Interpolation





## Wear Liners & Wear Resistant Products

Industry standard wear-resistant materials to protect and extend the life of your assets precisely cut to your exact specifications.

We use and recommend Bisalloy and Hardox material. It's always in stock and we can cut, drill, and countersink with supreme accuracy and speed. We also studweld liners.

From simple stock standard wear products to detailed engineered liners that require absolute accuracy and hole placement, anything can be achieved.

## Additional Services

- 2D CAD Drawing & DXF file Development
- Digitizer with 3,000m x 1,200m template space (for Reverse Engineering Parts)
- Part ID Marking
- Etching
- Hard Stamping
- Bevel Cutting
- Machining
- Drilling
- Countersink / Counterbore
- Tapping
- Milling
- Stud Welding
- Pressing
- Roll Forming

# Our capability goes beyond accuracy & speed

It involves clear communication to minimise waste and eliminate production setbacks ... it's the only way to deliver on budget, on time, and to spec.

Stop dealing with unorganised suppliers and higher prices that could have been avoided with better communication and waste minimisation.

Deltatech can help you achieve improved project efficiencies and stress free manufacturing. We do this with our commitment to clear communication avoiding unscheduled production cuts or project delays. By asking the right questions and always delivering on time - to spec Deltatech give you one less thing to worry about.

If you require large scale plate and wear product capability or a single service for rapid deployment, Deltatech's in-house capabilities & renowned reliability gives you the certainty to meet your production goals. If it's your head on the chopping block, rely on Deltatech's proven track record of delivering - on time and to spec.



# Structural Steel Grade Plate

250	Sheet Size		
5mm	9.0m x 2.4m	9.0m x 3.0m	
6mm	9.0m x 2.4m	9.0m x 3.0m	12.0m x 3.2m
8mm	9.0m x 2.4m	9.0m x 3.0m	12.0m x 3.2m
10mm	9.0m x 2.4m	9.0m x 3.0m	12.0m x 3.2m
12mm	9.0m x 2.4m	9.0m x 3.0m	12.0m x 3.2m
16mm	9.0m x 2.4m	9.0m x 3.0m	12.0m x 3.2m
20mm	9.0m x 2.4m	9.0m x 3.0m	12.0m x 3.2m
25mm	9.0m x 2.4m	9.0m x 3.0m	12.0m x 3.2m
28mm	9.0m x 2.4m		
32mm	9.0m x 2.4m	9.0m x 3.0m	
36mm	9.0m x 2.4m		
40mm	9.0m x 2.4m		
45mm	9.0m x 2.4m		
50mm	9.0m x 2.4m		

BIS80	Sheet Size		
8mm	8.0m x 2.485m		
10mm	8.0m x 2.485m	8.0m x 3.1m	
12mm	8.0m x 2.485m	8.0m x 3.1m	
16mm	8.0m x 2.485m	8.0m x 3.1m	
20mm	8.0m x 2.485m	8.0m x 3.1m	
25mm	8.0m x 2.485m	8.0m x 3.1m	
32mm	8.0m x 2.485m		
40mm	8.0m x 2.485m	80mm	6.0m x 2.0m
50mm	8.0m x 2.485m	90mm	7.0m x 2.0m
60mm	6.0m x 2.485m	100mm	7.0m x 2.0m
70mm	6.0m x 2.0m	120mm	5.9m x 2.0m

350	Sheet Size	
5mm	9.0m x 2.4m	9.0m x 3.0m
6mm	9.6m x 2.4m	
8mm	9.6m x 2.4m	
10mm	9.6m x 2.4m	9.6m x 3.1m
12mm	9.6m x 2.4m	9.6m x 3.1m
16mm	9.6m x 2.4m	9.6m x 3.1m
20mm	9.6m x 2.4m	9.6m x 3.1m
25mm	9.6m x 2.4m	9.6m x 3.1m
28mm	9.6m x 2.4m	9.6m x 3.1m
32mm	9.6m x 2.4m	9.6m x 3.1m
36mm	9.6m x 2.4m	9.6m x 3.1m
40mm	7.6m x 2.4m	9.6m x 3.1m
50mm	7.6m x 2.4m	8.0m x 3.1m
55mm	9.0m x 2.4m	
60mm	7.6m x 2.4m	8.5m x 2.4m
70mm	6.0m x 2.4m	7.5m x 2.4m
80mm	5.5m x 2.4m	6.5m x 2.4m
90mm	6.3m x 2.4m	
100mm	6.5m x 2.1m	
110mm	6.5m x 2.2m	
120mm	6.5m x 2.1m	
130mm	6.0m x 2.0m	
140mm	6.5m x 2.0m	
150mm	5.0m x 2.0m	
160mm	5.0m x 2.0m	

STRENGTH700	Sheet Size
4mm	10.0m x 1.5m
5mm	10.0m x 1.5m
6mm	10.0m x 1.5m
8mm	10.0m x 1.5m
10mm	9.6m x 2.5m
12mm	9.6m x 2.5m
16mm	9.6m x 2.5m
20mm	9.6m x 2.5m
25mm	9.6m x 2.5m
32mm	8.0m x 2.5m
40mm	8.0m x 2.5m
50mm	8.0m x 2.5m
60mm	8.0m x 2.5m
70mm	6.0m x 2.0m
80mm	6.0m x 2.0m
90mm	6.0m x 2.0m
100mm	6.0m x 2.0m
120mm	5.8m x 1.65m
140mm	5.8m x 1.65m



# Our efficiency leads to lower prices and stress free installations

One less thing for you to worry about.

**Refined Efficiencies.** This is why at Deltatech, we have refined our customer service, our operations, and our technology to ensure a smooth project from the initial contact through to detailed drawings, best in class accuracy, and organised on-site delivery.

This efficiency leads to lower prices and stress free installations - one less thing for you to worry about.



# Abrasion Resistant Quench & Tempered Wearplate

BIS500	Sheet Size
10mm	8.0m x 2.485m
12mm	8.0m x 2.485m
16mm	8.0m x 2.485m
20mm	8.0m x 2.485m
25mm	8.0m x 2.485m
32mm	8.0m x 2.485m
40mm	8.0m x 2.485m
50mm	8.0m x 2.485m
60mm	6.0m x 2.485m
75mm	6.0m x 1.9m
10mm	6.0m x 1.525m

BIS450	Sheet Size	
8mm	8.0m x 2.485m	
10mm	8.0m x 2.485m	8.0m x 3.1m
12mm	8.0m x 2.485m	8.0m x 3.1m
16mm	8.0m x 2.485m	8.0m x 3.1m
20mm	8.0m x 2.485m	8.0m x 3.1m
25mm	8.0m x 2.485m	8.0m x 3.1m
32mm	8.0m x 2.485m	
40mm	8.0m x 2.485m	
50mm	8.0m x 2.485m	

BIS400	Sheet Size	
8mm	8.0m x 2.485m	
10mm	8.0m x 2.485m	8.0m x 3.1m
12mm	8.0m x 2.485m	8.0m x 3.1m
16mm	8.0m x 2.485m	8.0m x 3.1m
20mm	8.0m x 2.485m	8.0m x 3.1m
25mm	8.0m x 2.485m	8.0m x 3.1m
32mm	8.0m x 2.485m	
40mm	8.0m x 2.485m	
50mm	8.0m x 2.485m	

HARDOX450	Sheet Size		
3.2mm	8.0m x 2.5m		9.3m x 2.5m
4mm	8.0m x 2.5m		9.6m x 2.5m
5mm	8.0m x 2.5m		9.6m x 2.5m
6mm	8.0m x 2.5m		9.6m x 2.5m
8mm	8.0m x 2.5m		9.6m x 2.5m
10mm	8.0m x 2.5m	8.0m x 3.050m	9.6m x 2.5m
12mm	8.0m x 2.5m	8.0m x 3.050m	9.6m x 2.5m
16mm	8.0m x 2.5m	8.0m x 3.050m	
20mm	8.0m x 2.5m	8.0m x 3.050m	
25mm	8.0m x 2.5m	8.0m x 3.050m	
32mm	8.0m x 2.5m		
40mm	8.0m x 2.5m		
50mm	8.0m x 2.5m		

HARDOX500	Sheet Size
6mm	8.0m x 2.5m
8mm	8.0m x 2.5m
10mm	8.0m x 2.5m
12mm	8.0m x 2.5m
16mm	8.0m x 2.5m
20mm	8.0m x 2.5m
25mm	8.0m x 2.5m
32mm	8.0m x 2.5m
40mm	8.0m x 2.5m
50mm	8.0m x 2.5m
60mm	6.0m x 2.0m
75mm	4.0m x 2.0m
100mm	4.0m x 2.0m

Industry standard wear-resistant materials to protect and extend the life of your assets precisely cut to your exact specifications.

We use and recommend Bisalloy and Hardox material. It's always in stock and we can cut, drill, and countersink with supreme accuracy and speed. We also studweld liners.

From simple stock standard wear products to detailed engineered liners that require absolute accuracy and hole placement, anything can be achieved.

# Plasma Cutting Chromium Carbide Welded Overlay Plate for the Mining Industry

It's not just about having the right equipment but also the right expertise

Chromium Carbide Welded Overlay Plate's unique characteristics demand specialized equipment and expertise. Deltatech, equipped with advanced tools and experienced professionals, excels in handling these projects. Our team is adept at working with CCO plates, ensuring precision in cutting, bending, and welding while addressing the mining industry's specific challenges.



# Chromium Carbide Welded Overlay Plate - CCO

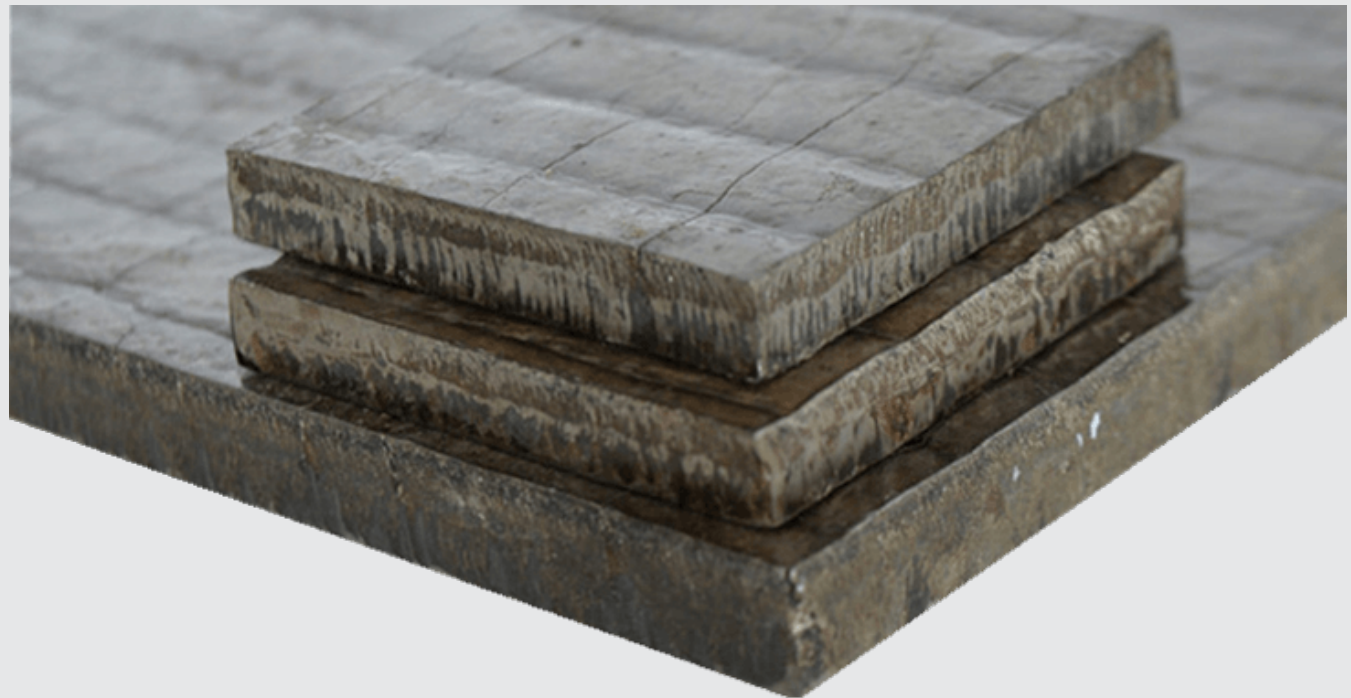
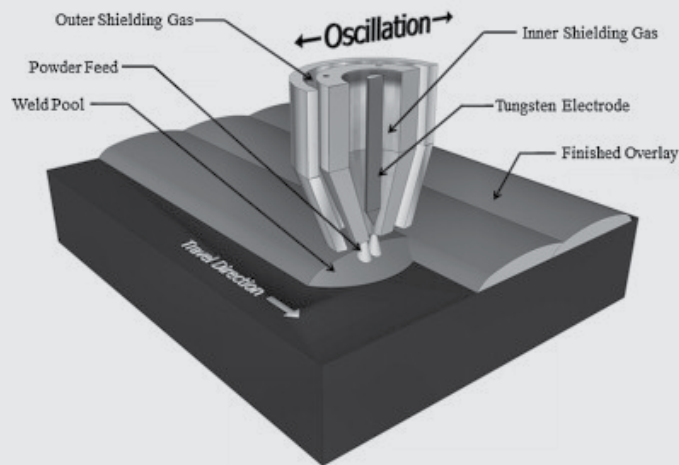
CCO Wearplate	Hardfacing (mm)	Base Plate (mm)
5 on 8	5	8
5 on 10	5	10
6 on 6	6	6
6 on 8	6	8
7 on 8	7	8
9 on 8	9	8
9 on 10	9	10
9 on 12	9	12
12 on 10	12	10
12 on 12	12	12
17 on 10	17	10
17 on 12	17	12
20 on 12	20	12
25 on 10	25	10

The general purpose fine grained austenitic chromium carbide grade that provides a solution for most applications.

**Characteristics:** Chromium Carbide Welded Overlay Plate (CCO) is a composite wearplate consisting of a hard abrasion resistant surface layer fused to a structural steel backing plate. The refined hyper-eutectic microstructure in the overlay provides excellent wear resistance against a wide range of wear mechanisms.

**Base Material:** The standard steel substrate is compliant with AS 3678 GRADE 250 steel or an equivalent in thickness ranges from 6-25mm. Other grades can be supplied upon request.

**Overlay Material:** The overlay material is an austenitic chromium carbide alloy consisting of a uniform, high density distribution of fine primary M7C3 carbides in a matrix of carbide and austenite as described in AS2576-2355.



**Kinetic**

**K5000xmc**



**We're all about customer service**

**From the initial contact through to onsite delivery**



# Here is our process to ensure successful outcomes right from the start:

1

## Ease

We aim to simplify plate delivery to your specifications. Our customer support guides you throughout, ensuring timely delivery tailored to your site operations.

2

## Project Clarity

Detail-oriented questioning is crucial for project success. Overlooking minor clarifications can lead to delays and increased costs. We prioritize attention to detail from the outset, ensuring timely and accurate delivery of cut plate and wear products every time.

3

## Reliable Production

We don't just promise speed and accuracy; we deliver. Our skilled technicians use top-notch cutting technology and project management to guarantee hassle-free and precise production. Our goal is timely delivery of perfectly fitting plate and wear products, preventing on-site setbacks.

4

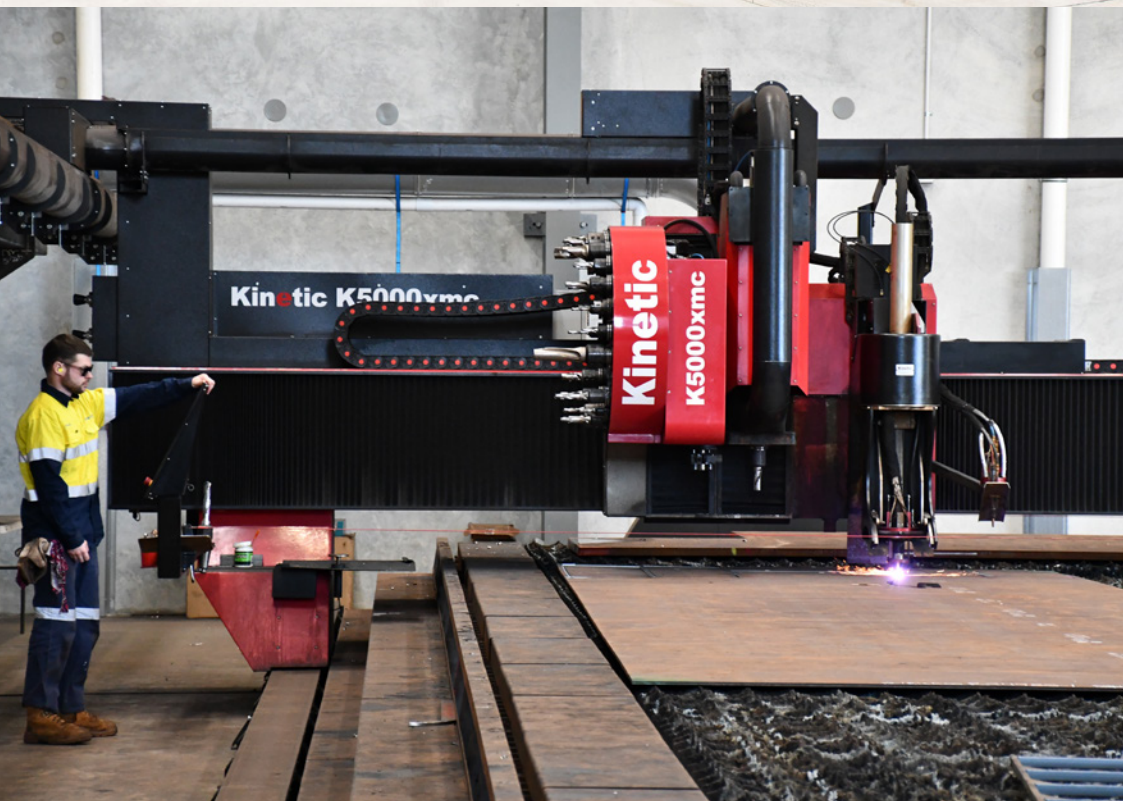
## Stringent QA & Accountability

Quality assurance is fundamental to Deltatech. We ensure the accuracy, reliability, and longevity of each component through rigorous QC. Our commitment to quality is transparent, emphasizing traceability.

5

## Delivered on time to spec

Deltatech prioritizes ease, accuracy, and reliable logistics. We recognize the repercussions of incorrect or disorganized deliveries. Trust in our consistent record of timely and precise deliveries to prevent site production delays.



## Our Mission is to:

**Understand your Objectives so we can Deliver your desired Outcomes. We are committed to Delivering In Full and On Time.**

Our Success is built on the foundation of asking the right questions at the start. By understanding your objectives we can help you achieve them with maximum ROI.

Once we Identify the objective, we prioritize and execute. We achieve this by starting quickly and minimizing waste. Combined with our can-do Attitude and Innovative approach, we help you reach your objectives faster.



# Our Values & Behaviours

**Effective  
Communication**  
Always Ask



**Efficiency**  
Prioritize



**Innovation**  
Think & Investigate



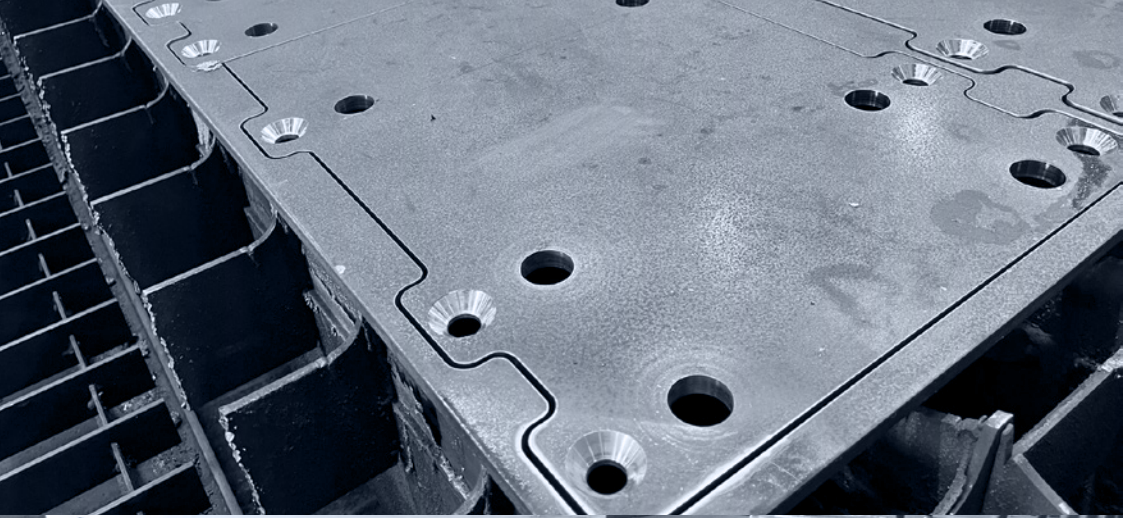
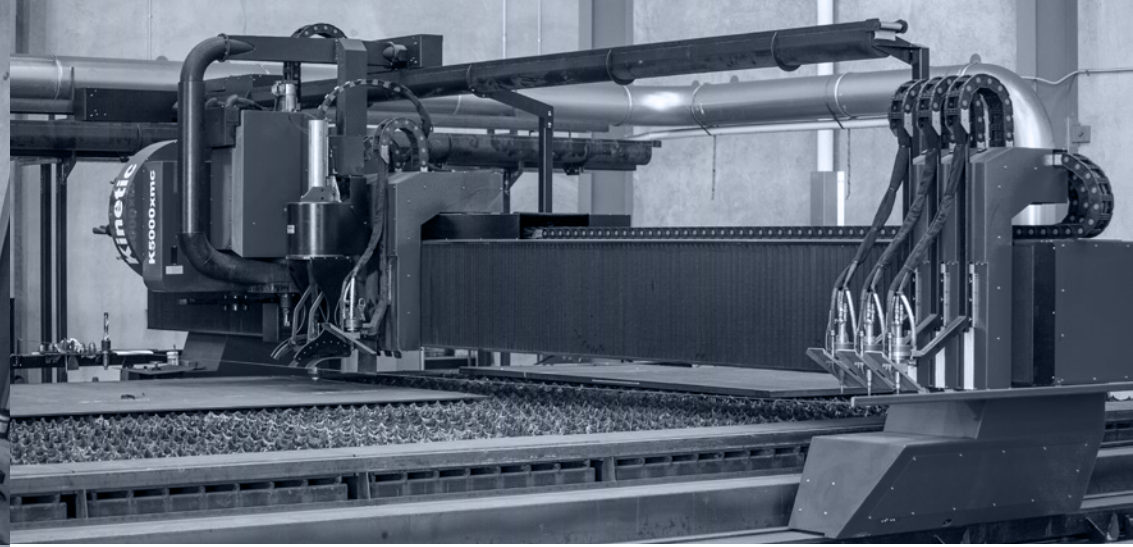
**Agility**  
Execute With Purpose

**A Can-Do Attitude**



**Never Give Up**







A large mining truck is shown in a quarry, carrying a full load of ore. The truck is positioned on a dirt road, and the background shows the rugged, rocky terrain of the mine. The truck's body is heavily loaded with dark, chunky pieces of ore, and dust is visible as it moves. The truck's large tires and heavy-duty frame are prominent features. The overall scene is industrial and emphasizes the scale of the mining operation.

## **YOUR PROJECT OUR FOCUS**

**RESULTS DRIVEN STEEL & WEAR PLATE PROCESSING**





## **YOUR PROJECT OUR FOCUS**

**RESULTS DRIVEN STEEL & WEAR PLATE PROCESSING**

p. +61 8 6117 9980

PO Box 3423, Success WA 6164

55 Investigator Drive, Hope Valley, WA 6165

quotes@deltatech.au

**www.deltatech.au**